



RoHS
COMPLIANT

174298.00 AND 174299.00

This series of drives is DC in / DC out PWM chassis drives capable of four quadrant reversing and braking. This series of drives is ideal for portable battery powered equipment. The drives have the ability to maintain variable speed even as battery decreases and have a sleep mode for extended battery life while not in use. The four quadrant capability allows simple connections for fast reversing and/or braking without the need for bulky contactors or braking resistors. The 1.01 form factor produces clean DC output for efficient and quiet motor operation.

These drives are microprocessor based, meaning these ranges can be reprogrammed to meet any custom needs. The drives also have Power and Fault LEDs, including current limit, under voltage, overheat and short circuit.

FEATURES

Microprocessor-based Design - Allows custom programming and configuration for the unique needs of OEMs.

Fully Regenerative - 4-Quadrant drives allow for quick and contactorless braking and/or reversing on-the-fly.

High Efficiency - Outputs up to 100% of input voltage.

Coil Output - Applies a voltage out to a brake coil when disabled or the motor is stopped.

Precharge Circuit - Prevents large in-rush currents on power up.

Extends Battery Life - Enters sleep mode when disabled. Temperature Sensor - Reduces motor current if drive is too hot. Short Circuit Protection - Protects itself against shorted output.

Stopping Modes - Inhibit (N.O.) for braking and Enable (N.C.) for coasting to a stop. Can be used for frequent starting and stopping.

Diagnostic LEDs - Power, Status (Undervoltage, Overvoltage, Short Circuit / Current Trip, Overheat Warning, Overheat Trip).

174298.00 AND 174299.00

SPECIFICATIONS

- DC Source Voltage 174298.00: 10 - 32 VDC
174299.00: 20 - 62 VDC
- Acceleration Time Range: 0.2 - 20 seconds
- Deceleration Time Range: 0.2 - 20 seconds
- Analog Signal Range: 0 - 5 VDC
- Input Impedance (S1 to S2): 520K Ω Form Factor 1.01
- Load Regulation: 1% of base speed or better
- Speed Range: 100:1
- Ambient Temperature Range: 10°C - 40°C

ORDERING INFO

MODEL #	ENCLOSURE	CONTINUOUS CURRENT (ADC)	PEAK CURRENT (ADC)*	INPUT VOLTAGE (VDC)	OUTPUT VOLTAGE (VDC)	POWER RANGE		BRAKING	REVERSING	ISOLATION
						HP	KW			
174298.00	CHASSIS	120**	250**	12	0-12	1/6-3 1/8	.12-2.3	YES Regenerative	YES Regenerative	YES Regenerative
				24	0-12	1/6-3 1/8	.12-2.3			
					0-24	1/3-6 1/4	.25-4.7			
174299.00	CHASSIS	100***	250***	36	0-36	1/2-9 1/2	.37-7.1	YES Regenerative	YES Regenerative	NO
				48	0-36	1/2-9 1/2	.37-7.1			
					0-48	1-12 1/2	.75-9.3			

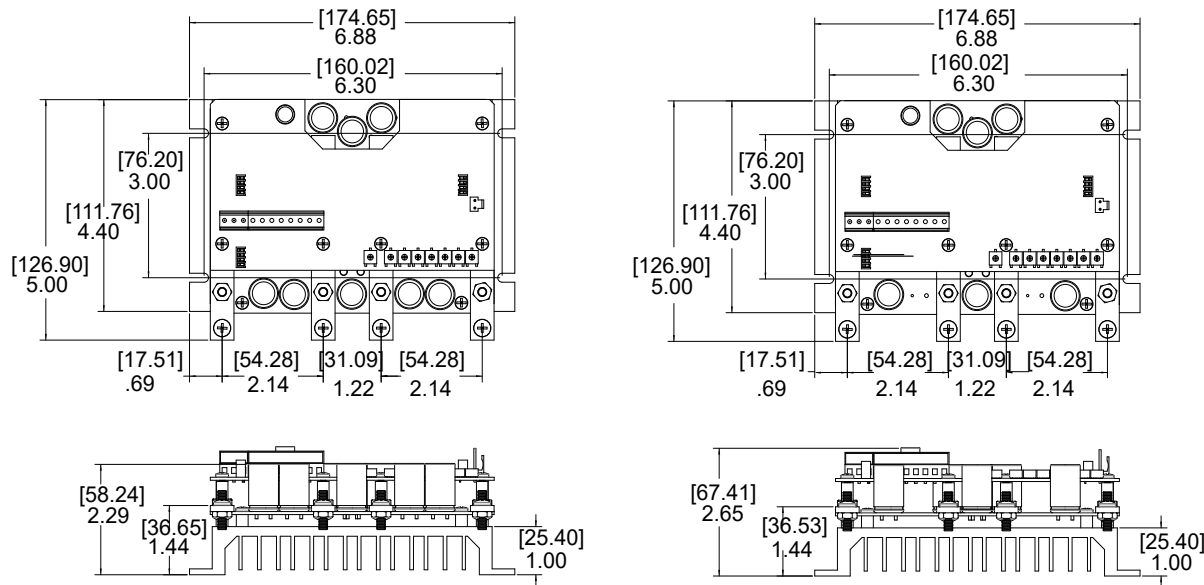
* Peak time of 1 minute.

** De-rate by 15% when mounted horizontally.

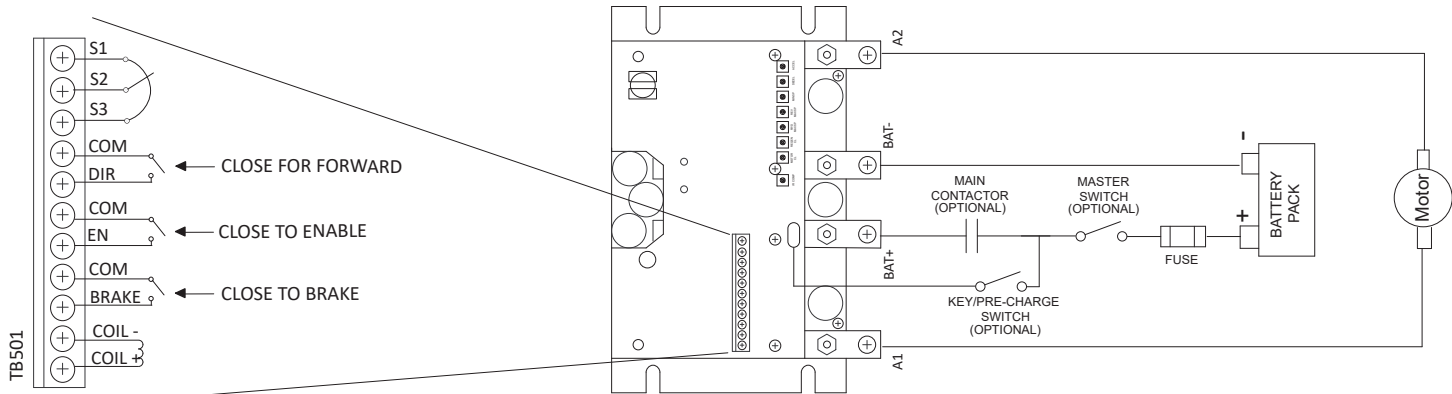
*** De-rate by 20% when mounted horizontally.

174298.00 AND 174299.00

DIMENSIONAL DRAWINGS — INCHES [MILLIMETERS]



WIRING



TRIM POTS

- Acceleration
- Minimum Speed
- Motoring Current Limit
- Deceleration
- Forward Maximum Speed
- Speed
- Regen Current Limit
- IR Compensation Reverse
- Maximum Speed

GROWTH IS MUTUAL.

It's the result of decisions well made, and commitments perfectly executed. When we do things right, your growth is impacted as well. From solutions that save energy and money, to robust systems that keep you up and running, we'll anticipate your needs and deliver beyond your expectations. See what deep roots, a strong core product line, talented teams and a commitment to excellence can do for you. We invite you to grow with Regal.



Regal Beloit America, Inc.

1051 Cheyenne Avenue
Grafton, WI 53024
Customer Service: 262-377-8810
Fax: 262-377-9025

www.regalbeloit.com

APPLICATION CONSIDERATIONS

The proper selection and application of power transmission products and components, including the related area of product safety, is the responsibility of the customer. Operating and performance requirements and potential associated issues will vary appreciably depending upon the use and application of such products and components. The scope of the technical and application information included in this publication is necessarily limited. Unusual operating environments and conditions, lubrication requirements, loading supports, and other factors can materially affect the application and operating results of the products and components and the customer should carefully review its requirements. Any technical advice or review furnished by Regal Beloit America, Inc. and/or its affiliates ("Regal") with respect to the use of products and components is given in good faith and without charge, and Regal assumes no obligation or liability for the advice given, or results obtained, all such advice and review being given and accepted at customer's risk.

For a copy of our Standard Terms and Conditions of Sale, please visit <http://www.regalbeloit.com> (please see link at bottom of page to "Standard Terms and Conditions of Sale"). These terms and conditions of sale, disclaimers and limitations of liability apply to any person who may buy, acquire or use a Regal product referred to herein, including any person who buys from a licensed distributor of these branded products.

Regal and Leeson are trademarks of Regal Beloit Corporation or one of its affiliated companies.
©2018 Regal Beloit Corporation, All Rights Reserved. MCSSP18073E • Form# L0040E

