



# 174102.00, 174103.00 AND 174107.00 DC DRIVE - 1Q SCR - NEMA 4X

These drives provide a reliable and economical solution for variable speed control of DC motors from 1/8 to 2 horsepower.

Housed in a NEMA 4X enclosure, the dual voltage drive is ideal for washdown applications and provides protection from moisture, windblown dust and incidental contact.

Included are power and current limit LEDs, line fuses, inhibit pins for remote start/stop, and a speed adjust knob mounted on the front cover. In addition, the 174102.00 model includes an On/Off switch on the front cover; the 174107.00 model- a Forward/Off/Reverse switch; and the 174103.00 model- an On/Off switch and a Manual/Signal switch.

With excellent control and a plastic NEMA 4X enclosure, these drives are the perfect solution for many applications that require an enclosed drive.

## FEATURES

**NEMA 4X Plastic Enclosure** - Plastic weatherproof and corrosion resistant enclosure that protects against dirt and splashing.

**Field Supply** - Voltage output to energize the field winding of a shunt-wound motor.

**Stopping Modes** - Inhibit (N.O.) for coasting to a stop. Can be used for frequent starting and stopping.

**Line Fusing** - Includes two on-board fuses. Diagnostic LEDs - Current Limit, Power

**Pre-Wired Switches** - Power (ON/OFF)

# 174102.00, 174103.00 AND 174107.00 DC DRIVE - 1Q SCR - NEMA 4X

## SPECIFICATIONS

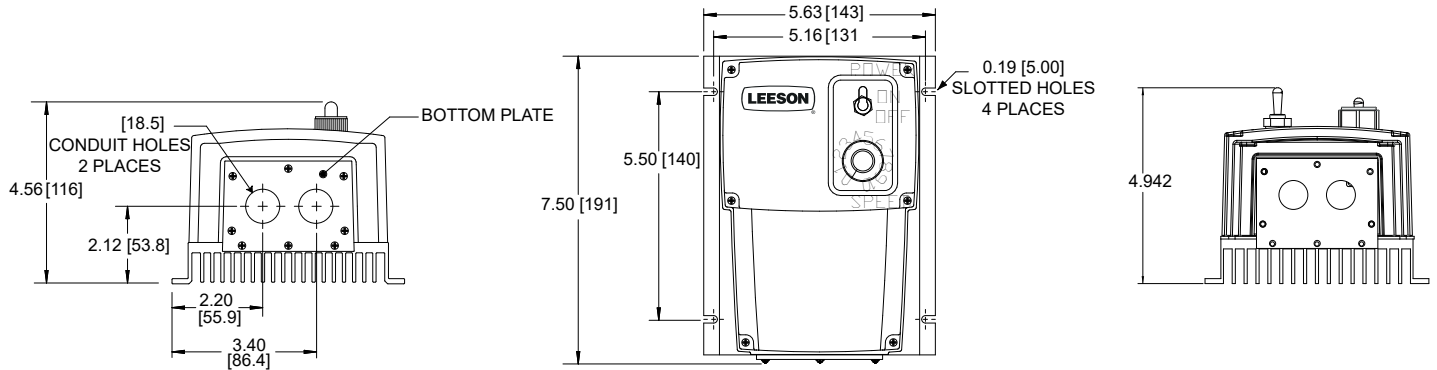
- AC Line Voltage: 115 / 230 VAC,  $\pm 10\%$ , 50/60 Hz, 1 $\emptyset$
- Field Voltage **with 115 VAC Line (230 VAC Line):**
  - 50/100 (100/200) VDC
- Maximum Field Amperage: 1 Amp
- Acceleration Time Range: 0.5 - 15 seconds
- Deceleration Time Range: coast to 15 seconds
- Analog Signal Range **with 90V Armature:** Isolated 0 - 1.4 VDC
  - **with 180V Armature:** Isolated 0 - 2.8 VDC
- Analog Signal Range 174103.00: 0 - 10 VDC, 4 - 20 mA
- Input Impedance (S1 to S2):  $>100K \Omega$
- Form Factor.: 1.37 at base speed
- Load Regulation: 1% of base speed or better
- Speed Range: 60:1
- Ambient Temperature Range: 10°C - 40°C

## ORDERING INFO

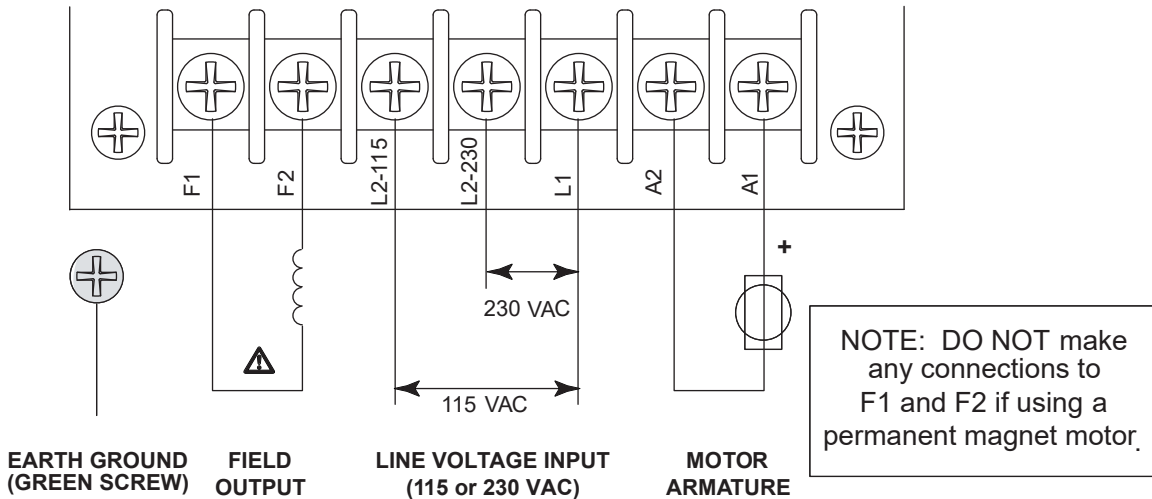
MODEL #	ENCLOSURE	MAXIMUM CURRENT (ADC)	INPUT VOLTAGE (VAC)	OUTPUT VOLTAGE (VDC)	POWER RANGE		FIELD/ SHUNT SUPPLY (VDC)	BRAKING	REVERSING	ISOLATION
					HP	KW				
174102.00	NEMA 4X	10	115	0-90	1/8-1	.09-.75	YES	NO	NO	NO
			230	0-90	1/8-1	.09-.75				
				0-180	1/4-2	.19-1.5				
174103.00	NEMA 4X	10	115	0-90	1/8-1	.09-.75	YES	NO	NO	YES
			230	0-90	1/8-1	.09-.75				
				0-180	1/4-2	.19-1.5				
174107.00	NEMA 4X	10	115	0-90	1/8-1	.09-.75	YES	NO	YES	NO
			230	0-90	1/8-1	.09-.75				
				0-180	1/4-2	.19-1.5				

# 174102.00, 174103.00 AND 174107.00 DC DRIVE - 1Q SCR - NEMA 4X

## DIMENSIONAL DRAWINGS — INCHES [MILLIMETERS]



## WIRING



## TRIM POTS

- Acceleration
- IR Compensation
- Signal Maximum (174307.00)
- Current Limit
- Maximum Speed
- Signal Minimum (174307.00)
- Deceleration
- Minimum Speed

## ACCESSORIES

- 900282.01:** Inhibit Plug with 18" wire leads

## GROWTH IS MUTUAL.

It's the result of decisions well made, and commitments perfectly executed. When we do things right, your growth is impacted as well. From solutions that save energy and money, to robust systems that keep you up and running, we'll anticipate your needs and deliver beyond your expectations. See what deep roots, a strong core product line, talented teams and a commitment to excellence can do for you. We invite you to grow with Regal.



**Regal Beloit America, Inc.**

1051 Cheyenne Avenue

Grafton, WI 53024

Customer Service: 262-377-8810

Fax: 262-377-9025

[www.regalbeloit.com](http://www.regalbeloit.com)

**APPLICATION CONSIDERATIONS**

The proper selection and application of power transmission products and components, including the related area of product safety, is the responsibility of the customer. Operating and performance requirements and potential associated issues will vary appreciably depending upon the use and application of such products and components. The scope of the technical and application information included in this publication is necessarily limited. Unusual operating environments and conditions, lubrication requirements, loading supports, and other factors can materially affect the application and operating results of the products and components and the customer should carefully review its requirements. Any technical advice or review furnished by Regal Beloit America, Inc. and/or its affiliates ("Regal") with respect to the use of products and components is given in good faith and without charge, and Regal assumes no obligation or liability for the advice given, or results obtained, all such advice and review being given and accepted at customer's risk.

For a copy of our Standard Terms and Conditions of Sale, please visit <http://www.regalbeloit.com> (please see link at bottom of page to "Standard Terms and Conditions of Sale"). These terms and conditions of sale, disclaimers and limitations of liability apply to any person who may buy, acquire or use a Regal product referred to herein, including any person who buys from a licensed distributor of these branded products.

Regal and Leeson are trademarks of Regal Beloit Corporation or one of its affiliated companies.

©2018 Regal Beloit Corporation, All Rights Reserved. MCSSP18038E • Form# L0039E

