

174065.00 & 174066.00 DC DRIVE-4Q SCR-CHASSIS

Gone are the days of large volumes and high prices for customizable control solutions. The 174065.00 and 174066.00 are affordable, multi-function, fully regenerative SCR controls designed specifically for small to mid-sized machine builders and large volume OEMs. The onboard microprocessor allows for custom firmware, configurable trim pots and user specified inputs and outputs.

FEATURES

Industry Standard Footprint - Traditional mounting pattern and footprint allow for replacing competitive drives.

Microprocessor-based Design - Allows custom programming and configuration for the unique needs of OEMs.

Fully Regenerative - 4-Quadrant drives allow for quick and contactorless braking and/or reversing on-the-fly.

Torque Mode - Can be used for speed control or torque control in tensioning applications.

Stopping Modes - Inhibit can be set for N.O. or N.C. operation, and can be set for braking or coasting to a stop. Can be used for frequent starting and stopping.

Bidirectional (Wigwag) Mode - Can be set so that the potentiometer determines both speed and direction.

174065.00 & 174066.00 DC DRIVE-4Q SCR-CHASSIS

SPECIFICATIONS

- AC Line Voltage: 115 / 230 VAC, $\pm 10\%$, 50/60 Hz, 1 \emptyset
- Acceleration Time Range: 0.5 - 20 seconds
- Deceleration Time Range: 0.5 - 20 seconds
- Analog Signal Range: 0 \pm 10 VDC
- Input Impedance (COM to SIG): >100K Ω
- Form Factor: 1.37 at base speed
- Load Regulation: 1.0% of base speed or better
- Speed Range: 50:1
- Ambient Temperature Range: 10°C - 50°C

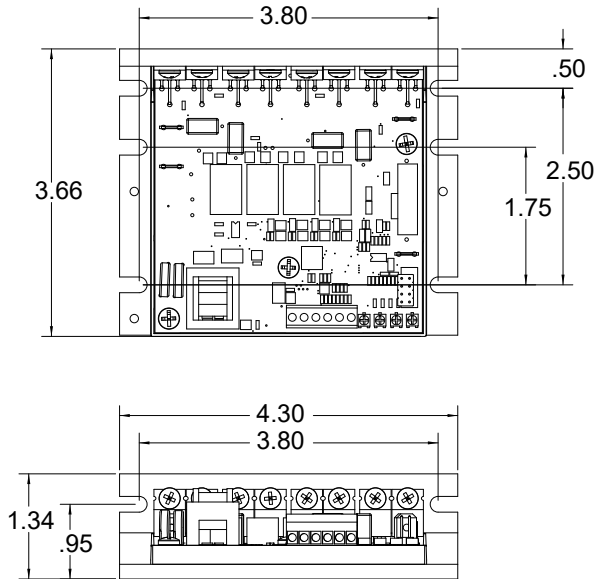
ORDERING INFO

MODEL #	ENCLOSURE	MAXIMUM CURRENT (ADC)	INPUT VOLTAGE (VAC)	OUTPUT VOLTAGE (VDC)	POWER RANGE		FIELD/ SHUNT SUPPLY (VDC)	BRAKING	REVERSING	ISOLATION
					HP	KW				
174065.00	CHASSIS	1.5	115	0-90	1/50-1/8	.01-.09	NO	YES Regenerative	YES Regenerative	NO
			230	0-90	1/50-1/8	.01-.09				
				0-180	1/25-1/4	.03-.19				
174066.00	CHASSIS	11*	115	0-90	1/8-1	.09-.75	NO	YES Regenerative	YES Regenerative	NO
			230	0-90	1/8-1	.09-.75				
				0-180	1/4-2	.19-1.5				

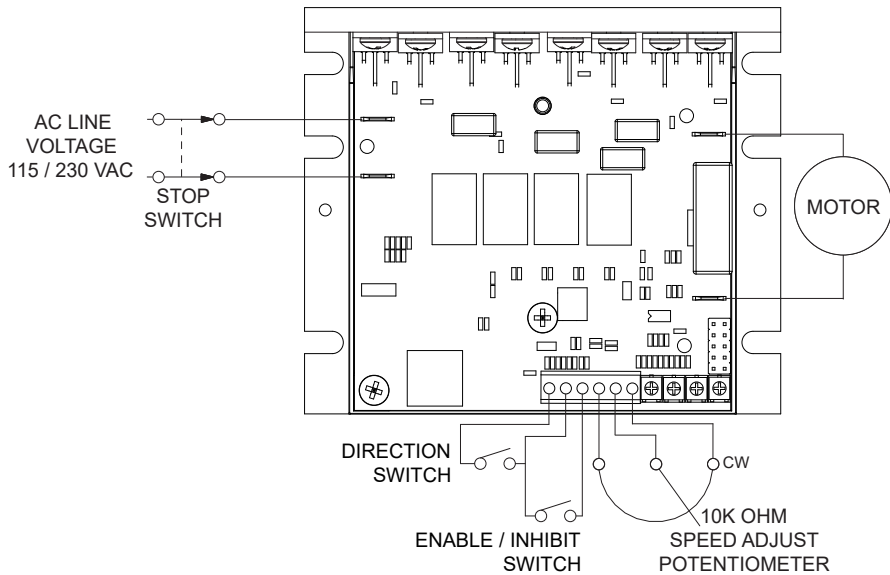
* Heat sink kit 174314.00 must be used when the continuous output current is above 8 amps.

174065.00 & 174066.00 DC DRIVE-4Q SCR-CHASSIS

DIMENSIONAL DRAWINGS — INCHES [MILLIMETERS]



WIRING



TRIM POTS

Current Limit
Maximum Speed IR
Compensation Offset

ACCESSORIES

006708.01: Potentiometer kit (included with purchase of drive)
174314.00: Heat sink

GROWTH IS MUTUAL.

It's the result of decisions well made, and commitments perfectly executed. When we do things right, your growth is impacted as well. From solutions that save energy and money, to robust systems that keep you up and running, we'll anticipate your needs and deliver beyond your expectations. See what deep roots, a strong core product line, talented teams and a commitment to excellence can do for you. We invite you to grow with Regal.



Regal Beloit America, Inc.

1051 Cheyenne Avenue

Grafton, WI 53024

Customer Service: 262-377-8810

Fax: 262-377-9025

www.regalbeloit.com

APPLICATION CONSIDERATIONS

The proper selection and application of power transmission products and components, including the related area of product safety, is the responsibility of the customer. Operating and performance requirements and potential associated issues will vary appreciably depending upon the use and application of such products and components. The scope of the technical and application information included in this publication is necessarily limited. Unusual operating environments and conditions, lubrication requirements, loading supports, and other factors can materially affect the application and operating results of the products and components and the customer should carefully review its requirements. Any technical advice or review furnished by Regal Beloit America, Inc. and/or its affiliates ("Regal") with respect to the use of products and components is given in good faith and without charge, and Regal assumes no obligation or liability for the advice given, or results obtained, all such advice and review being given and accepted at customer's risk.

For a copy of our Standard Terms and Conditions of Sale, please visit <http://www.regalbeloit.com> (please see link at bottom of page to "Standard Terms and Conditions of Sale"). These terms and conditions of sale, disclaimers and limitations of liability apply to any person who may buy, acquire or use a Regal product referred to herein, including any person who buys from a licensed distributor of these branded products.

Regal and Leeson are trademarks of Regal Beloit Corporation or one of its affiliated companies.

©2018 Regal Beloit Corporation, All Rights Reserved. MCSSP18030E • Form# L0031E

