

EVERGREEN® HVAC MOTOR REPLACEMENT SOLUTIONS



INDOOR BLOWER MOTORS



INDUCTION MOTORS

Shaded Pole or PSC (typically built with two brown or purple run capacitor wires)



CONSTANT TORQUE ECM MOTORS

- Genteq® models X13, Endura® Pro, Ensité® and Ensité Air motors
- US Motors® SelectTech® and RESCUE SELECT® motors
- Broad Ocean® motors (with 24 VAC speed taps)



CONSTANT AIRFLOW (VARIABLE SPEED) ECM MOTORS

(GE® model 2.0, Genteq models 2.3, 5.0, Eon® and Eon 5.0 motors)

Note: The model 2.3 motor has the same physical appearance as the model 2.5 motor. Always confirm the model name on motor or use online cross reference tool on back page.



CONSTANT AIRFLOW (VARIABLE SPEED) ECM MOTORS

(GE® model 2.5 motor)

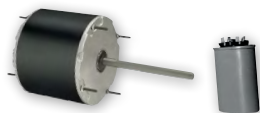
Note: The model 2.5 motor has the same physical appearance as the model 2.3 motor. Always confirm the model name on motor or use online cross reference tool located on back page.



CONSTANT AIRFLOW (VARIABLE SPEED) ECM MOTORS

(Genteq models 3.0 and Eon+® motors, also branded as Eon Serial)

OUTDOOR FAN MOTORS



INDUCTION MOTORS

Shaded Pole or PSC motors ONLY

*Attribution statement appears on back page.

EVERGREEN REPLACEMENT OPTIONS



EVERGREEN® IM & DS MOTORS

- Match VAC, RPM and HP ratings
- The FLA (amperage) rating does not need to match
- If the old motor does not use a belly band mount, a new mount will be needed



EVERGREEN® EM & CM MOTORS

- Match VAC and HP ratings
- The FLA (amperage) and RPM ratings do not need to match



EVERGREEN® VS MOTORS & USER INTERFACE (UI)

- Match VAC and HP ratings
- The FLA (amperage) and RPM ratings do not need to match
- The UI (#5K010V) is required for this application and is installed permanently with the motor. This part is sold individually OR now together in one box.



EVERGREEN® VS MOTORS & 16-4 PIN ADAPTER

- Match VAC and HP ratings
- The FLA (amperage) and RPM ratings do not need to match
- The 16-4 Pin Adapter (#5K015) is required for this application and is installed permanently with the motor.
- This part is sold separately from the motor.



EVERGREEN® VS MOTORS

- Match VAC and HP ratings
- The FLA (amperage) and RPM ratings do not need to match

EVERGREEN REPLACEMENT OPTIONS



EVERGREEN® OM MOTORS

- Stock #6303S
- Match VAC and HP ratings
- Installs and connects just like a PSC motor
- Shaft down or horizontal applications

REMOTE MOUNT OPTION

- Stock #6303R
- Remote mount control
- All angle mount
- OEM mounting holes

GENTEQ® EVERGREEN® MOTOR SPECIFICATIONS

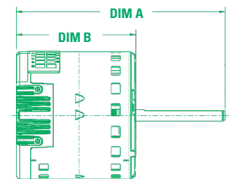
MODEL	STOCK	HP	VOLTS	FLA	RPM	SPEEDS	SHAFT	DIM A	DIM B
Evergreen® EM Motors <i>Dual Voltage Design</i> X13, Endura® Pro, Ensight® and Ensight Air Motor Replacement	6203X	1/3	115/208-230	4.1/2.8	1050	5/PWM	.5" x 5" (4.5" SF)	10.67"	5.74"
	6205X	1/2	115/208-230	6.4/4.1	1050	5/PWM	.5" x 5" (4.5" SF)	10.91"	5.99"
	6207X	3/4	115/208-230	8.4/6.0	1050	5/PWM	.5" x 5" (4.5" SF)	11.41"	6.49"
	6210X	1	115/208-230	12.2/9.0	1050	5/PWM	.5" x 5" (4.5" SF)	12.45"	7.53"
Evergreen CM Motors X13 and Endura Pro Motor Replacement	6703	1/3	208-230/277	2.8	1075	5/PWM	.5" x 4" (3.5" SF)	9.66"	5.74"
	6705	1/2	208-230/277	4.1	1075	5/PWM	.5" x 4" (3.5" SF)	9.91"	5.99"
	6707	3/4	208-230/277	6.0	1075	5/PWM	.5" x 4" (3.5" SF)	10.41"	6.5"
	6710	1	208-230/277	7.6	1075	5/PWM	.5" x 4" (3.5" SF)	11.17"	7.25"
	6405	1/2	460	2.1	1075	5/PWM	.5" x 4" (3.5" SF)	10.53"	6.61"
	6407	3/4	460	3.1	1075	5/PWM	.5" x 4" (3.5" SF)	11.28"	7.36"
	6410	1	460	4.0	1075	5/PWM	.5" x 4" (3.5" SF)	12.03"	8.11"
Evergreen VS Motors Variable Speed Replacement Motor	6503V	1/3	120/240	5.0/2.8	1050	Variable	.5" x 5" (4.5" SF)	10.71"	5.71"
	6505V	1/2	120/240	7.7/4.3	1050	Variable	.5" x 5" (4.5" SF)	11.21"	6.21"
	6507V	3/4	120/240	10.1/6.1	1050	Variable	.5" x 5" (4.5" SF)	11.96"	6.96"
	6510V	1	120/240	12.8/7.4	1050	Variable	.5" x 5" (4.5" SF)	12.71"	7.71"
Evergreen VS Motors <i>with User Interface</i> Variable Speed Replacement Motor	6503VUI	1/3	120/240	5.0/2.8	1050	Variable	.5" x 5" (4.5" SF)	10.71"	5.71"
	6505VUI	1/2	120/240	7.7/4.3	1050	Variable	.5" x 5" (4.5" SF)	11.21"	6.21"
	6507VUI	3/4	120/240	10.1/6.1	1050	Variable	.5" x 5" (4.5" SF)	11.96"	6.96"
	6510VUI	1	120/240	12.8/7.4	1050	Variable	.5" x 5" (4.5" SF)	12.71"	7.71"
Evergreen IM Motors PSC Replacement Motor	6005	1/2 (1/2, 1/3, 1/4, 1/5)	115/230	6.7/4.0	1075	5	.5" x 5" (4.5" SF)	11.26"	6.34"
	6010	1 (1, 3/4, 1/2)	115/230	11.0/6.7	1075	5	.5" x 5" (4.5" SF)	12.76"	7.84"
Evergreen DS Motor	6007DS	3/4 (3/4, 1/2, 1/3)	115/208-230	11.0/6.7	1070	5	6.75" x .5" x 6.75"	–	–
NEW! Evergreen OM Motors PSC Replacement Motor	6303S	1/3-1/12	208-230	2.8	825/1075	2	.5" x 6.5" (6" SF)	10.98"	4.39"
	6303R	1/3-1/10	208-230	3.5	850/1100	2	.5" x 5.5" (5" SF)	9.79"	4.23"

ROTATION: Reversible // FRAME: NEMA®* 48

Evergreen Accessories	5K010V	Evergreen VS User Interface*
	5K015	Genteq® 16-4 Pin Adapter*
	5K016	Evergreen Rotation Reversing Harness*▲

* Sold separately and installed permanently with the motor.

▲ The Evergreen VS motor will automatically configure rotation to match the application. The rotation reversing harness (#5K016) is only needed if the motor does not operate the correct direction following the installation instructions.



Regal Rexnord

Customer Service: 800-672-6495

ECMMadeEasy.com

regalrexnord.com

The proper selection and application of products and components, including assuring that the product is safe for its intended use, are the responsibility of the customer. To view our Application Considerations, please visit <https://www.regalrexnord.com/Application-Considerations>.

To view our Standard Terms and Conditions of Sale, please visit <https://www.regalrexnord.com/Terms-and-Conditions-of-Sale>

*The following are believed to be the trademarks and/or trade names of their respective owners and are not owned or controlled by Regal Rexnord Corporation. Azure, MARS: Motors & Armatures, Inc.; Broad Ocean: Zhongshan Broad-Ocean Motor Co., Ltd.; GE: General Electric Company; NEMA: National Electrical Manufacturers Association; Rescue EZ13, Rescue Select, Rescue Select, SelectTech and US Motors: Nidec Corporation.

"Regal Rexnord" is not indicative of legal entity. Refer to product purchase documentation for the applicable legal entity.

Regal Rexnord, ECM Made Easy, Endura, Ensight, Eon, Eon+, Evergreen and Genteq are trademarks of Regal Rexnord Corporation or one of its affiliated companies.

© 2023, 2025 Regal Rexnord Corporation, All Rights Reserved. MCO-G0082-GQ-EN-US-08/2025



ONLINE EVERGREEN CROSS REFERENCE TOOL

Our online cross reference tool allows you to cross reference a Genteq OEM ECM model number to an exact Genteq Evergreen replacement motor. Scan this code with your smart phone or go to www.regalrexnord.com/cross-reference



MOTOR DECAL

MODEL NUMBER

