

FOOD PROCESSING AND WASHDOWN SOLUTIONS



STAINLESS STEEL HELICAL - RATIO MULTIPLIER

Available in NEMA® 56C or 140TC input and output configurations. Ideal for use between a stainless steel motor and a C-face stainless steel gear drive to gain needed additional gear reduction.

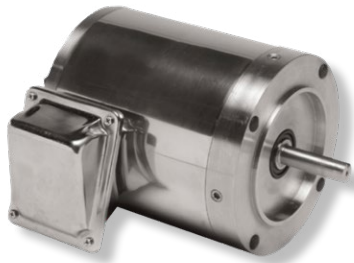
- 97% efficiency
- Power ratings to 4.6HP and ratios to 7/1 (nominal)
- Polished 316 stainless steel housings with rounded caps and covers for easy cleanability
- Food grade synthetic lubricant, USDA class H1



STAINLESS STEEL HERA® GEAR DRIVES

FEATURING:

- Smooth cast surface finish
- 90% efficiency
- Up to 2x torque density of worm speed reducers
- Power ratings to 8.5HP and ratios to 60/1 (nominal)
- No-Hassle Bolt-in replacement of major brands of worm speed reducers
- Factory filled with USDA H1 lubricant for application service life of the drive
- High pressure dual lip seals configured for severe high pressure and chemical washdown environments
- 316 stainless steel housings
- HACCP compatible and BISSC certified
- HubLoc® Keyless Bushing system available



LEESON® OR MARATHON® STAINLESS STEEL MOTORS

FEATURING:

- All stainless steel, totally enclosed
- 300 series stainless steel external construction: frame, endshields, conduit box, mounting base and hardware for superior corrosion resistance
- 100% paint-free construction
- Nameplate information laser etched on frame
- UL recognized, CSA certified and CE mark

FOOD PROCESSING AND WASHDOWN SOLUTIONS



HUB³® STAINLESS STEEL WORM GEAR DRIVES

FEATURING:

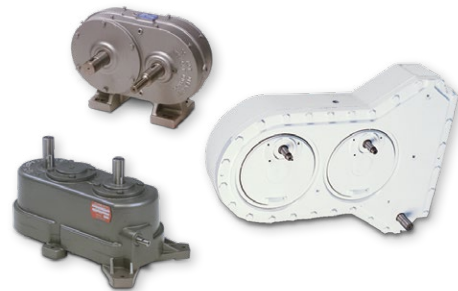
- Advanced design
- Now available in seven sizes
- Power ratings to 14HP and ratios to 100/1
- Polished 316 stainless steel housings with rounded caps and covers for easy cleanability
- 303 stainless steel output shafts and sleeves
- Food grade synthetic lubricant, USDA class H1
- Dual bolt patterns top and bottom mounting surfaces for universal mounting capability
- Available in solid output and hollow bore designs
- Available accessories include base kits, side-mounting flange kits, and output cover kits



HUB³ STAINLESS STEEL BEVEL GEAR DRIVES

FEATURING:

- Smooth machined or polished cast housing surface
- Power ratings to 50HP and ratios to 3/1
- Designed to be compliant with NSF/ANSI/3-A 14159-1—2002
- Factory filled with USDA H1 lubricant
- High pressure dual lip seals
- 316 series stainless steel housings
- HACCP compatible & BISSC certified



Regal Beloit America, Inc.

2914 Industrial Avenue
Aberdeen, SD 57401

Customer Service: 800-482-2489

Fax: 605-225-0567

Technical Service: 605-225-0360

hubsales@regalbeloit.com

regalbeloit.com/HubCity

CLEANLINE PLUS MODIFIED AND CUSTOM DRIVES

FEATURING:

- Designs tailored to your specifications
- Meeting unique application needs
- Special fabrications
- Corrosion resistant treatments such as powder or stainless steel paint

APPLICATION CONSIDERATIONS

The proper selection and application of products and components, including the related area of product safety, is the responsibility of the customer. Operating and performance requirements and potential associated issues will vary appreciably depending upon the use and application of such products and components. The scope of the technical and application information included in this publication is necessarily limited. Unusual operating environments and conditions, lubrication requirements, loading supports, and other factors can materially affect the application and operating results of the products and components and the customer should carefully review its requirements. Any technical advice or review furnished by Regal Beloit America, Inc. and/or its affiliates ("Regal") with respect to the use of products and components is given in good faith and without charge, and Regal assumes no obligation or liability for the advice given, or results obtained, all such advice and review being given and accepted at customer's risk.

For a copy of our Standard Terms and Conditions of Sale, please visit <https://www.regalbeloit.com/Terms-and-Conditions-of-Sale>. These terms and conditions of sale, disclaimers and limitations of liability apply to any person who may buy, acquire or use a Regal product referred to herein, including any person who buys from a licensed distributor of these branded products.

NEMA is believed to be the trademark of National Electrical Manufacturers Association, and is not owned or controlled by Regal Beloit Corporation.

Regal, Hera, Hub3, Hub City, HubLoc Leeson and Marathon are trademarks of Regal Beloit Corporation or one of its affiliated companies.

©2019 Regal Beloit Corporation, All Rights Reserved. MCSS19015E • Form# 9943E

REGAL®